

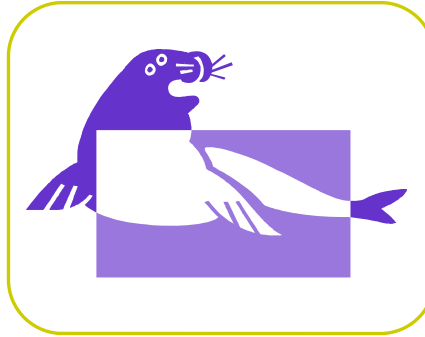
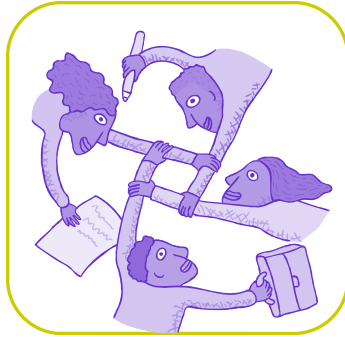
# 2008-2009 DI CHALLENGES!

## WISCONSIN DESTINATION IMAGINATION

CONTACT PAT SCHOONOVER OR LINDA RICE 715-346-4713 OR CREATIVE@UWSP.EDU



School of Education  
Room 404, CPS Bldg.  
1901 Fourth Ave.  
UW-Stevens Point  
Stevens Point, WI  
54481



### **Challenge A: Operation Cooperation**

Educational Focus: Technical Design and Construction, Innovation and Design Process, Research, Experimentation, Strategic Planning, Theater Arts, Teamwork

*Work is twice as easy...play is twice as much fun!*

### **Challenge B: Instinct Messaging**

Educational Focus: Theater Arts (Play writing, Scenic design and construction, performing), Animal Science, Research, Teamwork

*Shake, rattle and grrrrrowl!*

### **Challenge C: ViDlo Lit Hits!**

Educational Focus: Playwriting, Literature, Fine Arts/Theater Arts (Music, Choreography), Technical Design and Construction, and Design Process, Teamwork

*Let your inner rock star free!*

### **Challenge D: Private DI**

Educational Focus: Improvisational Acting, Story Development, Theater Arts, Team Work, Technical Innovation

*Super Sleuth meets some Superstitious Surprises!*

### **Challenge E: A New Angle!**

Educational Focus: Structural Engineering, Construction, Research, Innovation and Design Process, Mathematics, Theater Arts, Teamwork

*Merge, Mix and Mingle!*

### **Rising Stars!® Hidden!**

Educational Focus: Imagining Possibilities, Storytelling, Research, Science, Mathematics, Performing in front of an audience, Team problem solving, Working with others

Wisconsin website: <http://www.uwsp.edu/education/creative/di>  
International: <http://www.idodi.org> or [www.destinationimagination.org](http://www.destinationimagination.org)